

# SLA5810/20/40 SLAMF10/20 Series

Elastomer Sealed, Digital, Upstream, Downstream,  
and Remote Transducer Pressure Controllers

The SLA Series pressure controllers and pressure controlling flowmeters have gained broad acceptance as the standard for accuracy, stability and reliability. Based on the core control technology present in our industry-leading thermal mass flow controllers, SLA pressure controllers are able to control the pressure of a gas based on a set point signal by replacing the thermal mass flow sensor with a pressure sensor. They have a wide pressure measurement and control range and are suitable for a broad range of operating conditions making them well suited for applications in thin film processes, chemical and petrochemical research, laboratory, analytical, fuel cell and life sciences among others.



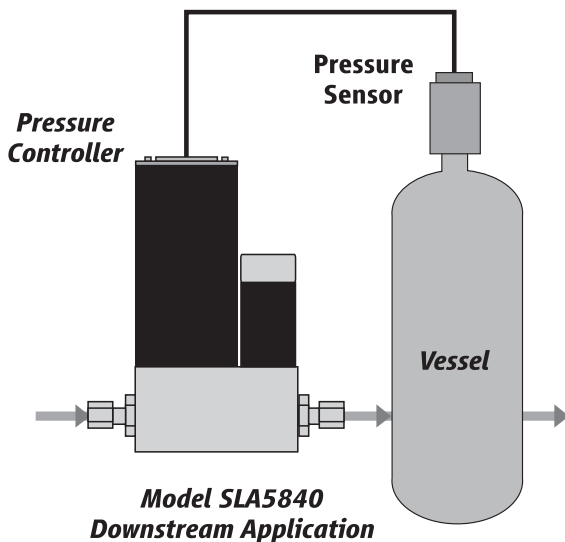
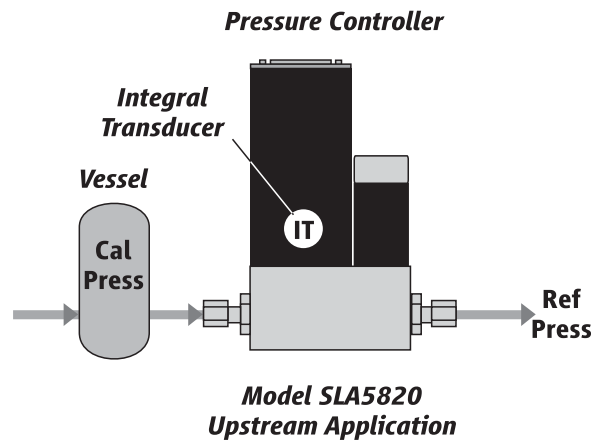
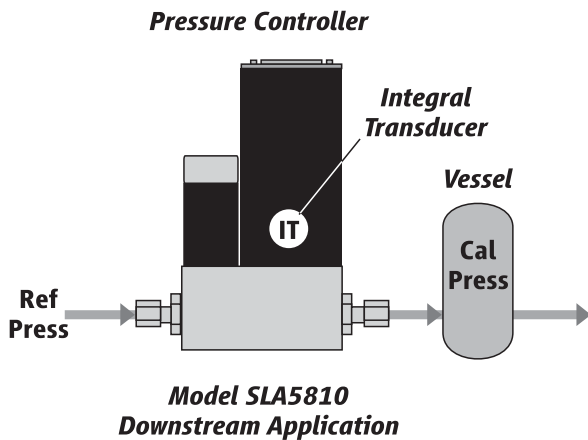
## Features

## Benefits

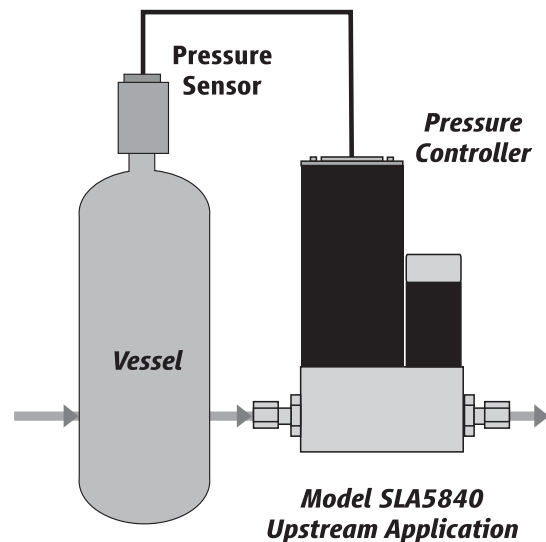
Closed Loop Control	Eliminates droop & hysteresis associated with traditional mechanical spring diaphragm pressure regulators
User Accessible Service Port	Simplified installation, start-up, troubleshooting and access to diagnostics provides maximum uptime
Wide Pressure Range Capabilities	Ability to control up to 4500 psig, giving it one of the widest pressure ranges on the market today
Advanced Diagnostics	Ensures device is operating within user specified limits for high process yield and maximum uptime
Superior Valve Technology	Minimum leak-by, maximum turndown, fast response reduces overall gas panel cost and increases throughput
Adaptable Mechanical Configurations	Easily retrofit to existing systems
Primary Standard Calibration Systems	Ensures measurement accuracy is traceable to international standards
Simple Modular Design and Reducing Total Cost of Ownership	Easy-to-service elastomer sealed design provides options for factory or field service maximizing uptime
IP66 and Hazardous Area Enclosure	Available on SLAMF for hosedown, washdown & hazardous area applications
Hazardous Area Approvals	Designed to operate in non-incendive (Division 2/Zone 2) environments

## Flexible Pressure Control Capabilities

SLA Series pressure controllers can be built for both upstream pressure control and downstream pressure control. These designations are determined by the location of the vessel where the pressure is being controlled. Our upstream pressure controllers can also be considered back pressure regulators, and our downstream pressure controllers can also be considered pressure regulators. In addition, a remote transducer configuration can be used to combine the benefits of pressure control and flow measurement.



With the pressure controller upstream of the vessel, the inlet of the pressure controller can be at atmospheric gas pressure or at the vapor pressure of a liquid source. The flow in this situation is usually determined by the characteristics of a vacuum pump.



When the controller is placed downstream of the pressure vessel, the flow is usually determined by a mass flow controller in the line upstream of the vessel.

# Product Specifications

## Flow Ranges and Pressure Ratings:

Pressure Controller Model	Pressure Controller Model	Flow Ranges N <sub>2</sub> Eq. Ratings		Minimum Full Scale Pressure	Maximum Full Scale Pressure	PED Module H Category
		Min. F.S.	Max. F.S.	Standard	Standard	
SLA5810/SLAMF10	Downstream (Pressure Regulator)	0.003 0.1	50 <sup>1</sup> 10	1 psi 1500 psi	1500 psia / 103 bara 4500 psia / 310 bara	SEP
SLA5820/SLAMF20	Upstream (Back Pressure Regulator)	0.003 0.1	50 <sup>1</sup> 10	1 psi 1500 psi	1500 psia / 103 bara 4500 psia / 310 bara	SEP
SLA5840	Remote Transducer Upstream & Downstream	0.003 0.1	50 10	10 psi 1500 psi	1500 psia / 103 bara 4500 psia / 310 bara	SEP

<sup>1</sup> Please see sizing tool for flow limitations < 10 psi F.S. pressure

	SLA58510/20 & SLAMF10/20	SLA5840
<b>Performance</b>		
Pressure Accuracy (Including linearity and Hysteresis)	±0.25% of Transducer F.S., F.S. > 300 psia ±0.12% of Transducer F.S., F.S. ≤ 300 psia	Dependent on Remote Pressure Transducer
Flow Accuracy (N <sub>2</sub> eq.)	N/A	±0.9% of S.P. (20 - 100% F.S.) ±0.18% of F.S. (2 - 20% F.S., 1 - 20% F.S. from 1 - 50 lpm)
Control Range	20:1 Typical - Application specific	
Repeatability & Reproducibility	0.20% S.P.	
Linearity	Included in accuracy	
Response Time (Settling Time within ± 2% F.S. for 0 - 100% command step)	System dependent	<1 second
Zero Stability	<±0.001% F.S. per 30 days	Dependent on Remote Pressure Transducer
Temperature Coefficient	<±0.1% F.S. per °C	Dependent on Remote Pressure Transducer
Pressure Coefficient (Flow Measurement Only)	N/A	±0.03% per psi (0 - 200 psi N <sub>2</sub> )
Attitude Sensitivity	The accuracy of the Pressure Sensor is not attitude dependent	

## Ratings

Operating Temperature Range	(-14) - 65°C (7 - 149°F) <sup>3</sup>	
Transducer Pressure Ratings	15 psia / 1.03 bara for <15 psia F.S. 15 psia / 1.03 barg for <15 psig F.S. 100 psia / 6.9 bara for <100 psia F.S. 100 psia / 6.9 bara for 15 - 100 psig F.S. 300 psia / 20.7 bara for 100 - 300 psia F.S. 300 psig / 20.7 barg for 100 - 300 psig F.S. 3000 psia / 206.9 bara for 300 - 3000 psia F.S. 4500 psia / 310.3 bara for 3000 - 4500 psia F.S.	Dependent on Remote Pressure Transducer
Leak Integrity (External)	1x10 <sup>-9</sup> atm. cc/sec He	

## Mechanical

Valve Type	Normally Closed, Normally Open
Primary Wetted Materials	316L Stainless Steel, High Alloy Stainless Steel, Viton® fluoroelastomers. Optional Buna-N, Kalrez®, Teflon®/Kalrez®, and EPDM

## Diagnostics

Status Lights	MFC Health, Network Status
Alarms <sup>2</sup>	Sensor Output, Control Valve Output, Over Temperature, Power Surge/Sag, Network Interruption
Diagnostic / Service Port	RS485 via 2.5 mm jack (Located under the top cover in SLAMF version)

<sup>2</sup> Alarm modes are dependent on the communications interface. These are described in the corresponding digital communication interface manual.

<sup>3</sup> Hazardous area certifications have a temperature range limitation of 0 - 65°C.

## Electrical Specifications

	RS485	Profibus®	DeviceNet® <sup>6</sup>
<b>Communication Protocol</b>			
Electrical Connection (SLA58XX)	1 x 15-pin Male Sub-D, (A)	1 x 15-pin Male Sub-D 1 x 9-pin Female Sub-D	1 M12 with threaded coupling nut (B)
Electrical Connection (SLAMF)	PG11 Cable Gland, 1/2" NPT (F) Conduit, M20 x 1.5 Conduit		N/A
Analog I/O	0 - 5 V, 1 - 5 V, 0 - 10 V, 0 - 20 mA, 4 - 20 mA		N/A
Power Max. / Purge	From +13.5 Vdc to +27 Vdc		From +11 Vdc to +25 Vdc
Power Requirements Watts, Max.	Valve Orifice >0.032": 8.7 Watts Valve Orifice ≤0.032": 5.2 Watts		Valve Orifice >0.032": 10 Watts Valve Orifice ≤0.032": 7 Watts
<b>Voltage Setpoint Input Specifications</b>			
Nominal Range	0 - 5 Vdc, 1 - 5 Vdc or 0 - 10 Vdc		N/A
Full Range	(-0.5) - 11 Vdc		N/A
Absolute Max	18 V (without damage)		N/A
Input Impedance	>990 kOhms		N/A
<b>Current Setpoint Input Specifications</b>			
Nominal Range	4 - 20 mA or 0 - 20 mA		N/A
Full Range	0 - 22 mA		N/A
Absolute Max	24 mA (without damage)		N/A
Input Impedance	100 Ohms		N/A
<b>Flow Output (Voltage) Specifications</b>			
Nominal Range	0 - 5 Vdc, 1 - 5 Vdc or 0 - 10 Vdc		N/A
Full Range	(-1) - 11 Vdc		N/A
Min Load Resistance	2 kOhms		N/A
<b>Flow Output (Current) Specifications</b>			
Nominal Range	0 - 20 mA or 4 - 20 mA		N/A
Full Range	0 - 22 mA		N/A
Max. Load	380 Ohms		N/A
<b>Analog I/O Alarm Output<sup>4</sup></b>			
Type	Open Collector		N/A
Max. Closed (On) Current	25 mA		N/A
Max. Open (Off) Leakage	1µA		N/A
Max. Open (Off) Voltage	30 Vdc		N/A
<b>Analog I/O Valve Override Signal Specifications<sup>5</sup></b>			
Floating / Unconnected	Instrument controls valve to command set point		N/A
VOR < 0.3 Vdc	Valve Closed		N/A
0.3 Vdc < VOR < 4.8 Vdc	Undefined		N/A
VOR > 4.8 Vdc	Valve Open		N/A
Input Impedance	60 kOhms		N/A
Absolute Max. Input	(-25 Vdc) < VOR < 25 Vdc (without damage)		N/A

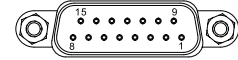
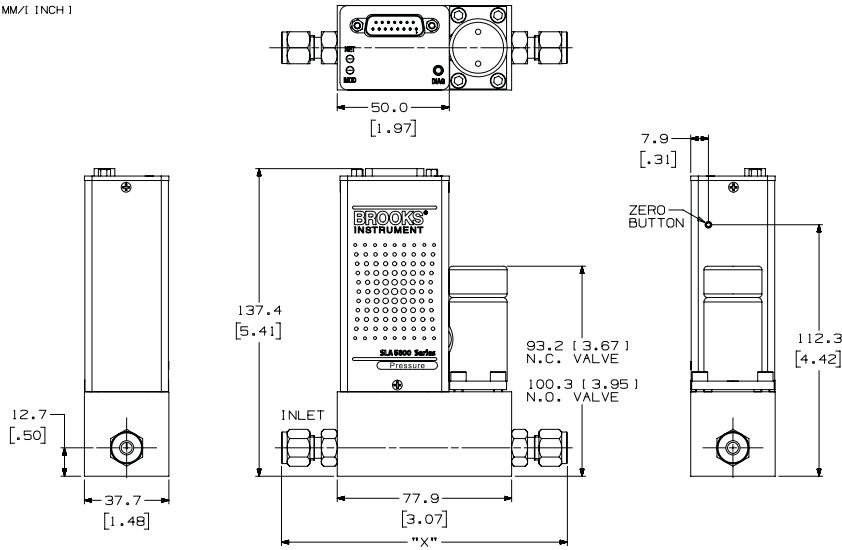
<sup>4</sup> The Alarm Output is an open collector or "contact type" that is CLOSED (on) whenever an alarm is active. The Alarm Output may be set to indicate any one of various alarm conditions.

<sup>5</sup> The Valve Override Signal (VOR) is implemented as an analog input which measures the voltage at the input and controls the valve based upon the measured reading as shown in this section.

<sup>6</sup> Available on SLA5810/20/40 only.

## SLA5810/20 - Thru-Flow, RS485

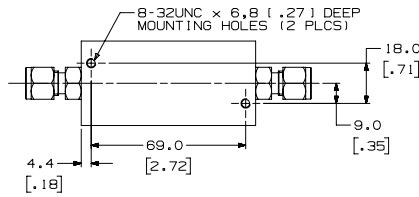
MM/1 INCH



15-Pin Sub-D Male Connector

Pin	Description
1	Setpoint Common
2	Pressure Output (0 - 5 V, 1 - 5 V)
3	Alarm Out
4	Pressure Output (0 - 20 mA, 4 - 20 mA)
5	Power Supply (13.5 - 27 V)
6	Not Connected
7	Setpoint Input (0 - 20 mA, 4 - 20 mA)
8	Setpoint Input (0 - 5 V, 1 - 5 V)
9	Power Common
10	Pressure Out Common
11	Not Connected
12	Valve Override Input
13	Aux Input (0 - 5 V, 0 - 10 V)
14	RS-485, B (-), Input / Output
15	RS-485, A (+), Input / Output

Fitting	Dim X
1/8" Tube Comp.	*122.7mm [4.83in]
1/4" Tube Comp.	*127.8mm [5.03in]
3/8" Tube Comp.	*130.8mm [5.15in]
1/4" VCR	124.0mm [4.88in]
1/4" VCO	117.6mm [4.63in]
1/4" NPT-F	125.5mm [4.94in]
3mm Tube Comp.	*127.8mm [5.03in]
6mm Tube Comp.	*127.8mm [5.03in]
10mm Tube Comp.	*131.3mm [5.17in]
3/8" - 1/2" VCR	138.9mm [5.47in]
3/8" - 1/2" VCO	128.8mm [5.07in]

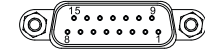
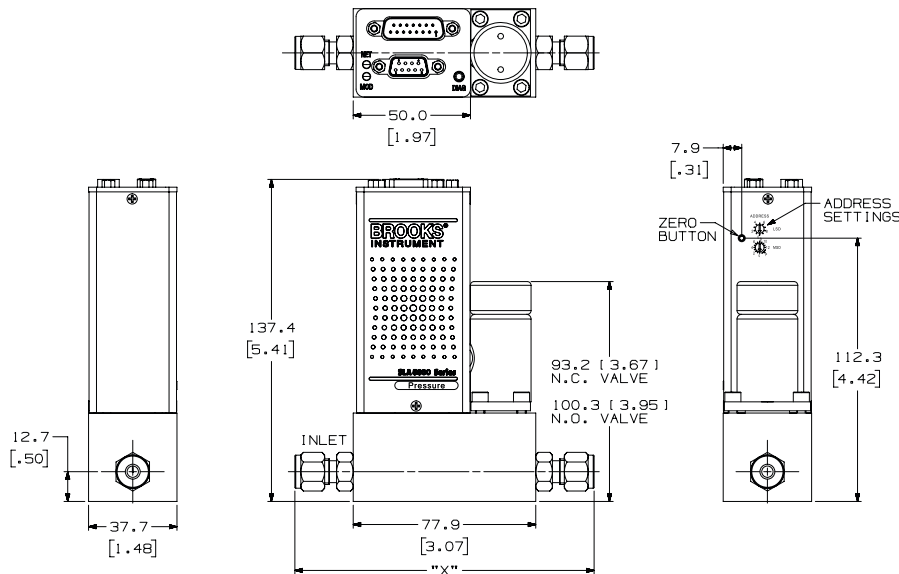


Note: Aux. Input only used for Remote Transducer Pressure Controllers.

\* Overall length finger tight

## SLA5810/20 - Thru-Flow, Profibus

MM/1 INCH



15-Pin Sub-D Male Connector

Pin	Description
1	Setpoint Common
2	Flow Output (0 - 5 V, 1 - 5 V, 0 - 10 V)
3	Alarm Out
4	Flow Output (0 - 20 mA, 4 - 20 mA)
5	Power Supply (13.5 - 27 V)
6	Not Connected
7	Setpoint Input (0 - 20 mA, 4 - 20 mA)
8	Setpoint Input (0 - 5 V, 1 - 5 V, 0 - 10 V)
9	Power Common
10	Flow Out Common
11	Not Connected
12	Valve Override Input
13	Aux Input (0 - 5 V, 0 - 10 V)
14	Not Connected
15	Not Connected



9-Pin Sub-D Female Connector

Pin	Description
1	Not Connected
2	Not Connected
3	RXD / TXD - B - red wire
4	Not Connected
5	Ground
6	+5 Vdc
7	Not Connected
8	RXD / TXD - A - green wire
9	Not Connected

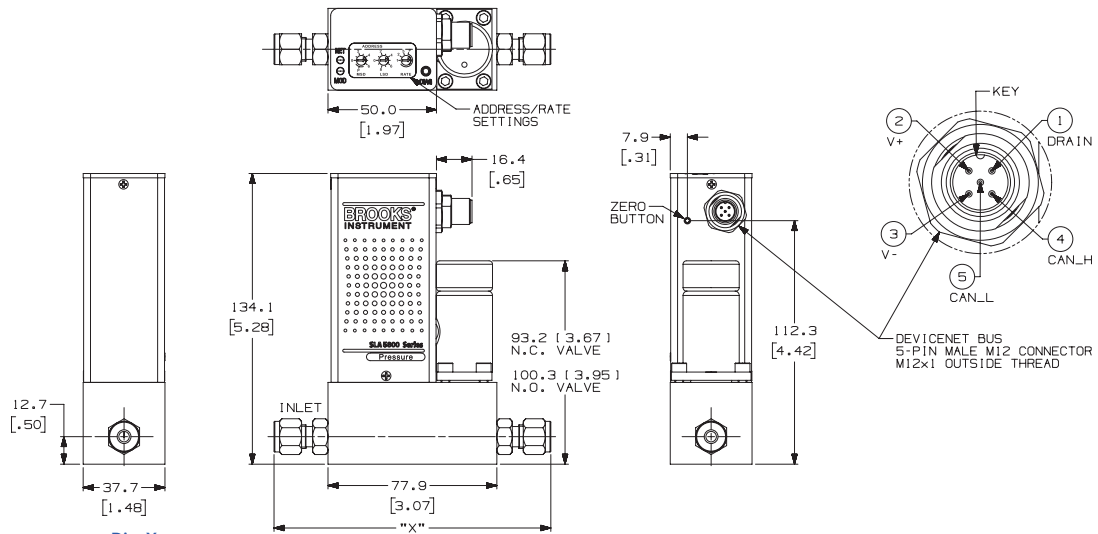
Note: Aux. Input only used for Remote Transducer Pressure Controllers.

Fitting	Dim X
1/8" Tube Comp.	*122.7mm [4.83in]
1/4" Tube Comp.	*127.8mm [5.03in]
3/8" Tube Comp.	*130.8mm [5.15in]
1/4" VCR	124.0mm [4.88in]
1/4" VCO	117.6mm [4.63in]
1/4" NPT-F	125.5mm [4.94in]
3mm Tube Comp.	*127.8mm [5.03in]
6mm Tube Comp.	*127.8mm [5.03in]
10mm Tube Comp.	*131.3mm [5.17in]
3/8" - 1/2" VCR	138.9mm [5.47in]
3/8" - 1/2" VCO	128.8mm [5.07in]

\* Overall length finger tight

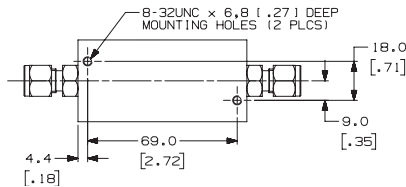
## SLA5810/20 - Thru-Flow, DeviceNet

MM/1 INCH



Fitting	Dim X
1/8" Tube Comp.	*122.7mm [4.83in]
1/4" Tube Comp.	*127.8mm [5.03in]
3/8" Tube Comp.	*130.8mm [5.15in]
1/4" VCR	124.0mm [4.88in]
1/4" VCO	117.6mm [4.63in]
1/4" NPT-F	125.5mm [4.94in]
3mm Tube Comp.	*127.8mm [5.03in]
6mm Tube Comp.	*127.8mm [5.03in]
10mm Tube Comp.	*131.3mm [5.17in]
3/8" - 1/2" VCR	138.9mm [5.47in]
3/8" - 1/2" VCO	128.8mm [5.07in]

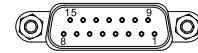
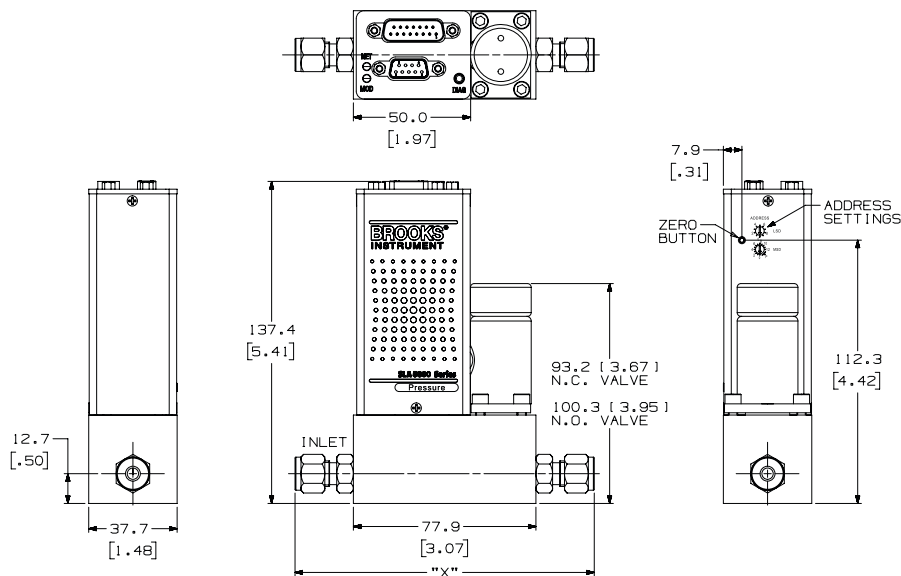
\* Overall length finger tight



Note: Aux. Input only used for Remote Transducer Pressure Controllers.

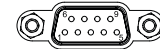
## SLA5840 - Thru-Flow, Profibus

MM/1 INCH



15-Pin Sub-D Male Connector

Pin	Description
1	Setpoint Common
2	Flow Output (0 - 5 V, 1 - 5 V, 0 - 10 V)
3	Alarm Out
4	Flow Output (0 - 20 mA, 4 - 20 mA)
5	Power Supply (13.5 - 27 V)
6	Not Connected
7	Setpoint Input (0 - 20 mA, 4 - 20 mA)
8	Setpoint Input (0 - 5 V, 1 - 5 V, 0 - 10 V)
9	Power Common
10	Flow Out Common
11	Not Connected
12	Valve Override Input
13	Aux Input (0 - 5 V, 0 - 10 V)
14	Not Connected
15	Not Connected



9-Pin Sub-D Female Connector

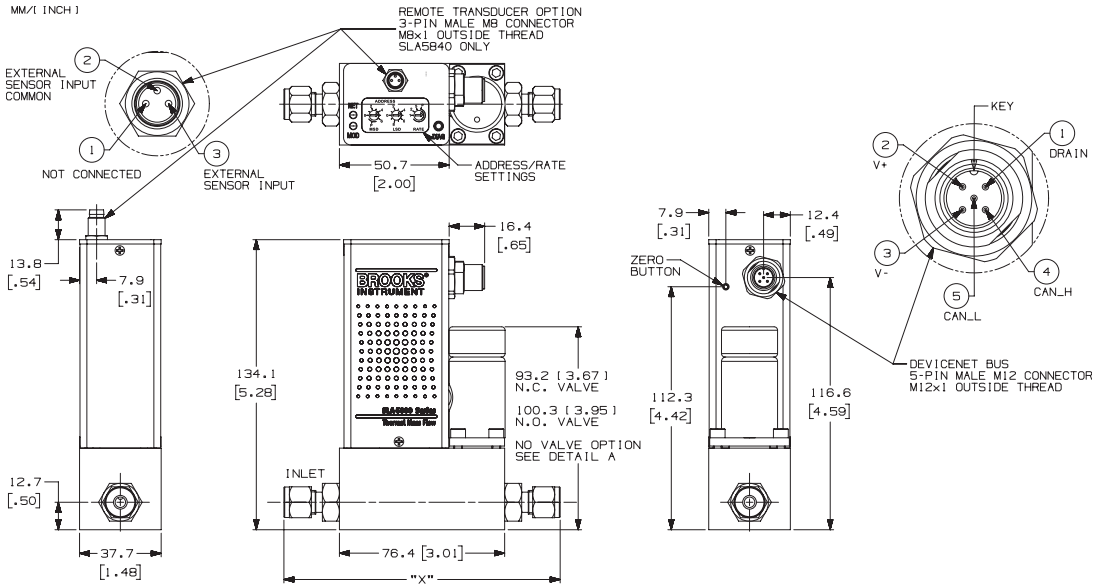
Pin	Description
1	Not Connected
2	Not Connected
3	RXD / TXD - B - red wire
4	Not Connected
5	Ground
6	+5 Vdc
7	Not Connected
8	RXD / TXD - A - green wire
9	Not Connected

Note: Aux. Input only used for Remote Transducer Pressure Controllers.

Fitting	Dim X
1/8" Tube Comp.	*122.7mm [4.83in]
1/4" Tube Comp.	*127.8mm [5.03in]
3/8" Tube Comp.	*130.8mm [5.15in]
1/4" VCR	124.0mm [4.88in]
1/4" VCO	117.6mm [4.63in]
1/4" NPT-F	125.5mm [4.94in]
3mm Tube Comp.	*127.8mm [5.03in]
6mm Tube Comp.	*127.8mm [5.03in]
10mm Tube Comp.	*131.3mm [5.17in]
3/8" - 1/2" VCR	138.9mm [5.47in]
3/8" - 1/2" VCO	128.8mm [5.07in]

\* Overall length finger tight

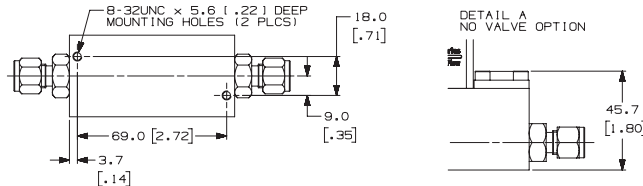
## SLA5840 - Thru-Flow, DeviceNet



**Fitting Dim X**

Fitting	Dim X
1/8" Tube Comp.	*123.1mm [4.85in]
1/4" Tube Comp.	*127.7mm [5.03in]
3/8" Tube Comp.	*130.7mm [5.15in]
1/2" Tube Comp.	*134.8mm [5.31in]
1/4" VCR	124.1mm [4.89in]
1/4" VCO	116.0mm [4.56in]
1/4" NPT-F	118.5mm [4.67in]
3mm Tube Comp.	*122.2mm [4.81in]
6mm Tube Comp.	*127.8mm [5.03in]
10mm Tube Comp.	*131.1mm [5.16in]
3/8" - 1/2" VCR	131.7mm [5.19in]
3/8" - 1/2" VCO	127.2mm [5.01in]
1/4" RC (BSP)	116.6mm [4.59in]

\* Overall length finger tight



Note: Aux. Input only used for Remote Transducer Pressure Controllers.

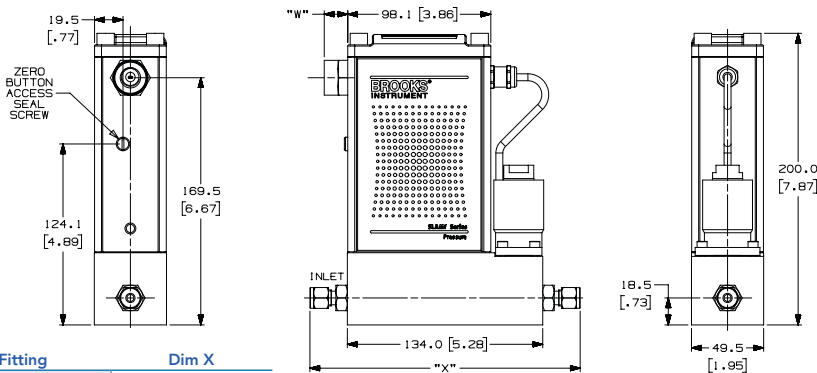
## SLAMF10/20 - Thru-Flow, RS485

MM/1 INCH 1

**Cable Connector Dim W**

Cable Connector	Dim W
Cable Gland 0.20 [5.1] to 0.39 [9.9] Dia. Cable	28.6mm [1.12in]
1/2" NPT-F Conduit	16.5mm [0.65in]
M20x1.5 (F) Conduit	12.5mm [0.49in]

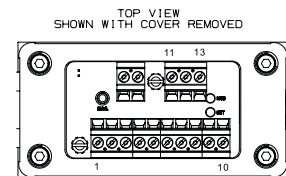
\* Overall length finger tight



**Fitting Dim X**

Fitting	Dim X
1/8" Tube Comp.	*180.7mm [7.12in]
1/4" Tube Comp.	*185.3mm [7.30in]
3/8" Tube Comp.	*188.4mm [7.42in]
1/2" Tube Comp.	*192.4mm [7.58in]
1/4" VCR	181.8mm [7.16in]
1/4" VCO	173.6mm [6.84in]
1/4" NPT-F	176.2mm [6.94in]
6mm Tube Comp.	*185.4mm [7.30in]
10mm Tube Comp.	*188.8mm [7.43in]
3/8" - 1/2" VCR	189.4mm [7.46in]
3/8" - 1/2" VCO	184.8mm [7.28in]
1/4" RC-F (BSP)	174.2mm [6.86in]

\* Overall length finger tight



Terminal	Description
1	Setpoint Common
2	Pressure Output (0 - 5 V, 1 - 5 V)
3	Alarm Out
4	Pressure Output (0 - 20 mA, 4 - 20 mA)
5	Power Supply (13.5 - 27 V)
6	Setpoint Input (0 - 20 mA, 4 - 20 mA)
7	Setpoint Input (0 - 5 V, 1 - 5 V)
8	Power Common
9	Pressure Out Common
10	Valve Override Input
11	Aux Input (0 - 5 V, 0 - 10 V)
12	RS-485, B (-), Input / Output
13	RS-485, A (+), Input / Output

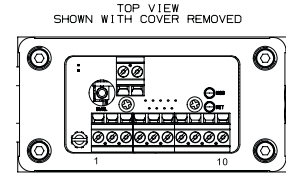
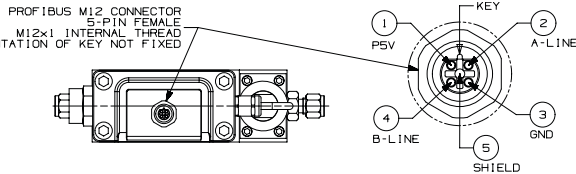
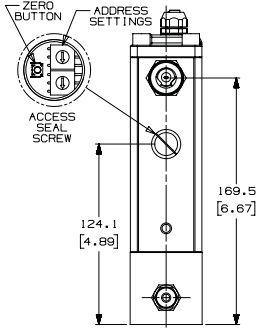
Note: Aux. Input only used for Remote Transducer Pressure Controllers.

## SLAMF10/20 - Thru-Flow, Profibus

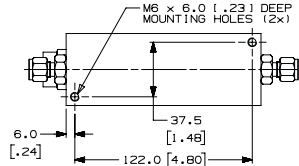
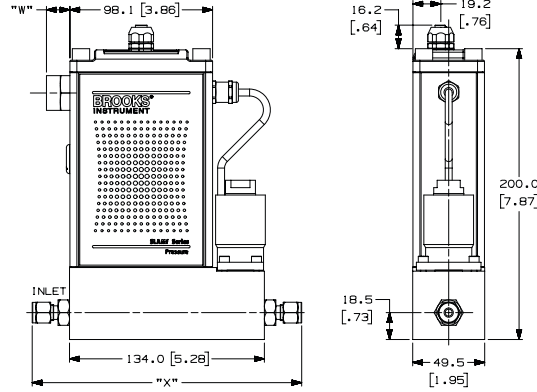
MM/1 INCH

Cable Connector	Dim W
Cable Gland 0.20 [5.1] to 0.39 [9.9] Dia. Cable	28.6mm [1.12in]
1/2" NPT-F Conduit	16.5mm [0.65in]
M20x1.5 (F) Conduit	12.5mm [0.49in]

\* Overall length finger tight



Terminal	Description
1	Power Supply (13.5 - 27 V)
2	Valve Override Input
3	Power Common
4	Aux Common
5	Aux Input (0 - 5 V, 0 - 10 V)
Terminal	Profibus M12 Connector Wire to Terminals 6-10
6	P5V (Brown)
7	RXD/TXD - B-Line (RED)
8	Ground (Blue)
9	RXD/TXD - A-Line (Green)
10	Shield (Gray)



Fitting	Dim X
1/8" Tube Comp.	*180.7mm [7.12in]
1/4" Tube Comp.	*185.3mm [7.30in]
3/8" Tube Comp.	*188.4mm [7.42in]
1/2" Tube Comp.	*192.4mm [7.58in]
1/4" VCR	181.8mm [7.16in]
1/4" VCO	173.6mm [6.84in]
1/4" NPT-F	176.2mm [6.94in]
6mm Tube Comp.	*185.4mm [7.30in]
10mm Tube Comp.	*188.8mm [7.43in]
3/8" - 1/2" VCR	189.4mm [7.46in]
3/8" - 1/2" VCO	184.8mm [7.28in]
1/4" RC-F (BSP)	174.2mm [6.86in]

\* Overall length finger tight

Note: Aux. Input only used for Remote Transducer Pressure Controllers.







Code Description	Code Option	Option Description
I. Base Model Code	SLA	Smart Link Advantage
II. Configurability	58	Standard Elastomer Series
	MF	Standard Elastomer Series (NEMA 4X/IP66 Housing)
III. Function	1	Downstream Pressure Controller
	2	Upstream Pressure Controller
	4	Remote Transducer Pressure Controller (SLA58XX Only)
IV. Gas or Range	0	3 ccm - 50 lpm
V. Digital I/O Communication (SLA58XX Pressure Controllers)	A	None (select applicable analog I/O)
	P	Profibus (5-pin female M12, M20 x 1.5 conduit)
	R	Profibus (5-pin female M12, PG11 cable gland)
	T	Profibus (5-pin female M12, 1/2" NPT (F) conduit)
	S	RS485 (select applicable analog I/O)
VI. Mechanical Connection	1A	Without adapters, 9/16" - 18 UNF
	1B	1/4" tube compression
	1C	1/8" tube compression
	1D	3/8" tube compression
	1E	1/4" VCR
	1F	1/4" VCO
	1G	1/4" NPT
	1H	6mm tube compression
	1J	10mm tube compression
	1L	3/8"-1/2" VCR
	1M	3/8"-1/2" VCO
	1P	1/2" tube compression
	1T	1/4" RC (BSP)
	1Y	3mm tube compression
	B1	1/4" tube compression w/filter
	C1	1/8" tube compression w/filter
	D1	3/8" tube compression w/filter
	E1	1/4" VCR w/filter
	F1	1/4" VCO w/filter
	G1	1/4" NPT w/filter
	H1	6mm tube compression w/filter
	J1	10mm tube compression w/filter
	L1	3/8"-1/2" VCR w/filter
	M1	3/8"-1/2" VCO w/filter
	P1	1/2" tube compression w/filter
	T1	1/4" RC (BSP) w/filter
Y1	3mm tube compression w/filter	
VII. O-Ring Material	A	Viton
	B	Buna
	C	PTFE
	D	Kalrez
	E	EPDM
	J	FDA/USP Class VI - Viton
	L	FDA/USP Class VI - EPDM

Code Description	Code Option	Option Description
IX. Valve Type	1	Normally Closed ( $\leq 1500$ psi)
	4	Normally Closed High Pressure (1500 - 4500 psi)
	5	Normally Open (SLA5810/20 Only) ( $\leq 1500$ psi)
X. Analog I/O Communications (SLA58XX Pressure Controllers)	A	None - Digital Communications Only
	B	0 - 5 Volt    0 - 5 Volt
	C	4 - 20 mA    4 - 20 mA
	L	1 - 5 Volt    1 - 5 Volt
	M	0 - 20 mA    0 - 20 mA
	0	0 - 10 Volt    0 - 10 Volt
	1	0 - 5 Volt    4 - 20 mA
	2	0 - 5 Volt    0 - 20 mA
	3	4 - 20 mA    0 - 5 Volt
	4	0 - 20 mA    0 - 5 Volt
9	0 - 10 Volt    0 - 5 Volt	
X. Analog I/O Communications (SLAMFXX Pressure Controllers)	A	None - Digital Communications Only
	E	4 - 20 Ma    0 - 5 Volt    PG11 Gland
	F	0 - 5 Volt    0 - 5 Volt    PG11 Gland
	G	4 - 20 mA    4 - 20 mA    PG11 Gland
	H	0 - 5 Volt    4 - 20 mA    PG11 Gland
	I	0 - 5 Volt    0 - 20 mA    PG11 Gland
	J	0 - 5 Volt    0 - 5 Volt    1/2" NPT (F) Conduit
	K	4 - 20 mA    4 - 20 mA    1/2" NPT (F) Conduit
	N	0 - 5 Volt    4 - 20 mA    M20 x 1.5 Conduit
	O	0 - 5 Volt    0 - 20 mA    M20 x 1.5 Conduit
	P	4 - 20 mA    0 - 5 Volt    M20 x 1.5 Conduit
	Q	0 - 20 mA    0 - 5 Volt    M20 x 1.5 Conduit
	R	1 - 5 Volt    1 - 5 Volt    PG11 Gland
	S	0 - 20 mA    0 - 20 mA    PG11 Gland
	T	1 - 5 Volt    1 - 5 Volt    1/2" NPT (F) Conduit
	U	0 - 20 mA    0 - 20 mA    1/2" NPT (F) Conduit
	V	0 - 5 Volt    0 - 5 Volt    M20 x 1.5 Conduit
	W	1 - 5 Volt    1 - 5 Volt    M20 x 1.5 Conduit
	X	0 - 20 mA    0 - 20 mA    M20 x 1.5 Conduit
	Y	4 - 20 mA    4 - 20 mA    M20 x 1.5 Conduit
Z	0 - 20 mA    0 - 5 Volt    PG11 Gland	
5	0 - 5 Volt    4 - 20 mA    1/2" NPT (F) Conduit	
6	0 - 5 Volt    0 - 20 mA    1/2" NPT (F) Conduit	
7	4 - 20 mA    0 - 5 Volt    1/2" NPT (F) Conduit	
8	0 - 20 mA    0 - 5 Volt    1/2" NPT (F) Conduit	
XI. Power Supply Inputs	1	+15 Vdc
	2	24 Vdc
XII. Output Enhancements	A	Standard Response
XIII. Certification	1	Safe Area
	2	For Zone II Atex / IECEx



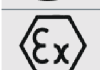


Sample Model Code

I	II	III	IV	V	VI	VII	VIII	IX	X	XI	XII	XIII
SLA	58	5	0	A	1A	A	B	1	B	1	A	1

## Certifications - SLA58XX

Mark	Agency	Certification	Applicable Standard	Details
	UL (Recognized)	Class I, Div 2, Group A, B, C, D Class I, Zone 2, IIC T4 Class II, Zone 22	UL & CSA Standards	E73889 Vol 3, Sec 4
	ATEX	II 3 G Ex nA IIC T4 Gc	EN 60079-0:2012 EN 60079-15:2010	KEMA 04ATEX 1118X
	IECEX	II 3 G Ex nA IIC T4 Gc	IEC 60079-0:2011 IEC 60079-15:2010	IECEX DEK 14.0072X
	KOSHA	Ex nA IIC T4		15-AV4BO-0641 15-AV4BO-0640
	CE	EMC Directive 2014/30/EU Directive 2011/65/EU	EN:61326-1:2013	EMC RoHS

## Certifications - SLAMFXX

Mark	Agency	Certification	Applicable Standard	Details
	UL (Recognized)	Class I, Div 2, Group A, B, C, D Class I, Zone 2, IIC T4 Class II, Zone 22 IP66	UL & CSA Standards	E73889 Vol 3, Sec 4
	UL (Listed)	Class I, Div 2, Group A, B, C, D Class I, Zone 2, IIC T4 Class II, Zone 22 IP66	UL & CSA Standards	E73889 Vol 1, Sec 25
	ATEX	II 3 G Ex nA IIC T4 Gc II 3 D Ex tc IIIC T 85°C Dc IP66	EN 60079-0:2012 + A11:2013 EN 60079-15:2010 EN 60079-31:2014	KEMA 04ATEX1290 X
	IECEX	Ex nA IIC T4 Gc Ex tc IIIC T 85°C Dc IP66	IEC 60079-0:2011 + Corr. 2012 + Corr. 2013 IEC 60079-15:2010 IEC 60079-31:2013	IECEX KEM 07.0043X
	KOSHA	Ex nA IIC T4 Ex tD A22 IP66 T85°C	The Ministry of Employment and Labor Notice No. 2013-34 Article 34 of the Industrial Safety and Health	15-AV4BO-0638 15-AV4BO-0639 16-AV4BO-0328X 16-AV4BO-0327X
	CE	EMC Directive 2014/30/EU Directive 2011/65/EU	EN:61326-1:2013	EMC RoHS

Brooks is committed to assuring all of our customers receive the ideal pressure controllers for their application, along with outstanding service and support to back it up. We operate first class repair facilities located around the world to provide rapid response and support. Each location utilizes primary standard calibration equipment to ensure accuracy and reliability for repairs and recalibration and is certified by our local Weights and Measures Authorities and traceable to the relevant International Standards.

Visit [www.BrooksInstrument.com](http://www.BrooksInstrument.com) to locate the service location nearest to you.

### START-UP SERVICE AND IN-SITU CALIBRATION

Brooks Instrument can provide start-up service prior to operation when required. For some process applications, where ISO-9001 Quality Certification is important, it is mandatory to verify and/or (re)calibrate the products periodically. In many cases this service can be provided under in-situ conditions, and the results will be traceable to the relevant international quality standards.

### SEMINARS AND TRAINING

Brooks Instrument can provide customer seminars and dedicated training to engineers, end users, and maintenance persons. Please contact your nearest sales representative for more details. Due to Brooks Instrument's commitment to continuous improvement of our products, all specifications are subject to change without notice.



### TRADEMARKS

Brooks ..... Brooks Instrument, LLC  
All other trademarks are the property of their respective owners.

Data-Sheet-PR-SLA5800-SLAMf-Series-PC-RT-EN/2025-02

### Global Headquarters

**Brooks Instrument**  
407 West Vine Street  
Hatfield, PA  
19440-0903 USA

Toll-Free (USA): 888-554-FLOW  
T: 215-362-3500

[BrooksAM@BrooksInstrument.com](mailto:BrooksAM@BrooksInstrument.com)

A list of all Brooks Instrument locations and contact details can be found at [www.BrooksInstrument.com](http://www.BrooksInstrument.com)

© Copyright 2024 Brooks Instrument, LLC All rights reserved. Printed in U.S.A.